

# Flow-X/V

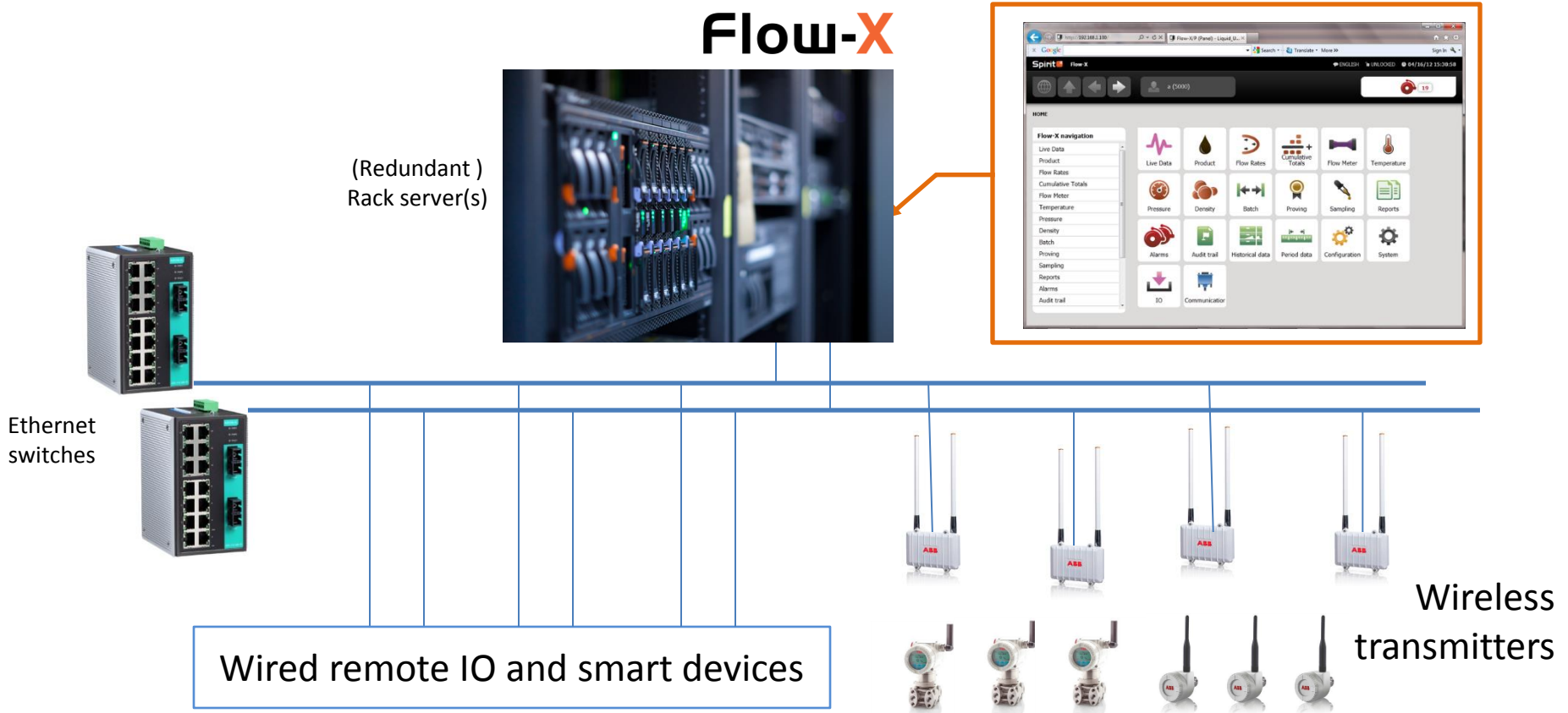
## Virtual Flow Computer Software

*Our answer to the IoT*

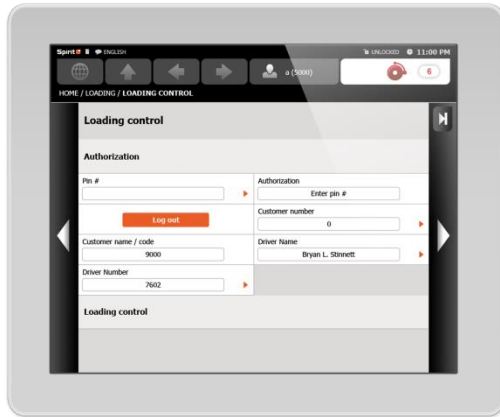
Han van Dal  
Spirit IT Eindhoven  
Oct 2016

# What is the Flow-X/V?

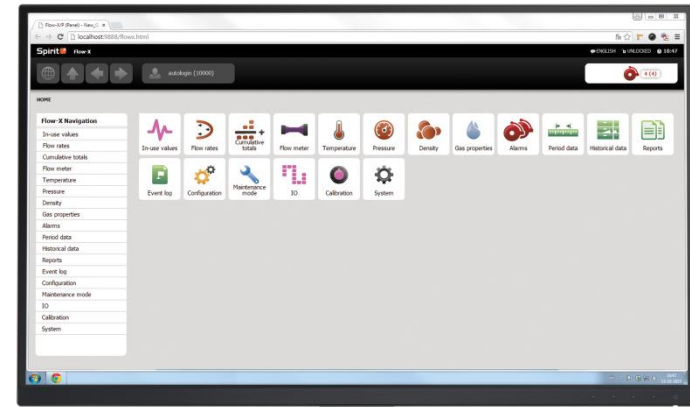
The Flow-X/V is the flow computer for the IOT that runs on any Windows-capable (virtual) machine and connects to any Modbus and HART device over Ethernet. It is the ideal 'flow computer'-grade solution for smart devices.



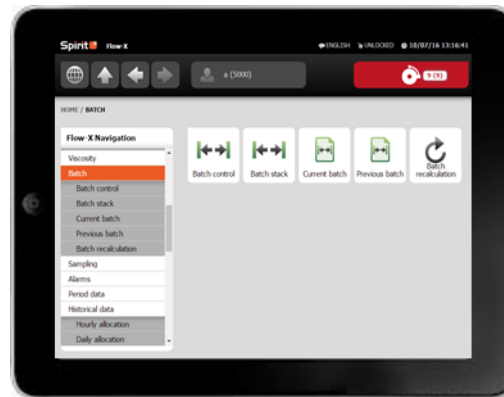
# Options for operator interfaces



PANEL-MOUNT MONITOR



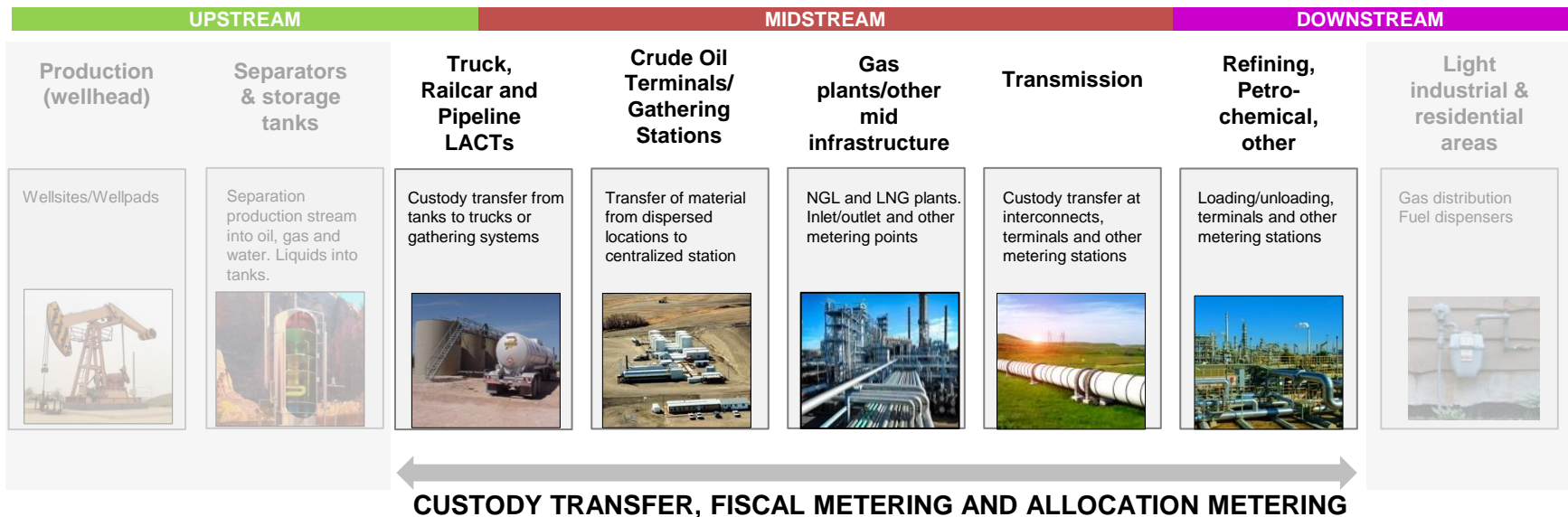
WEB BROWSER



TABLET

# Target markets

- Custody transfer, fiscal metering, allocation metering and multi-phase metering of oil and gas
- Natural gas production
  - Gas transmission pipelines, offshore production platforms, underground gas storage, gas processing plants, delivery to power plants and city gates
- Oil production
  - Liquid pipelines, LACTs, crude gathering, storage terminals, oil refineries, LNG terminals, NGL production



# Features and benefits

- Minimal hardware footprint
- Compliant with API MPMS Chapter 21.1 (AGA13) and 21.2
- For any number of streams / meter runs, from 1 to several 100's
- Works with any Modbus and HART capable IO device, therefore ideal for retrofits and upgrades
- Years of storage for report files and historical data archives

... and all the advantages of the Flow-X and Flow-Xpress software

- Personal user accounts for maximum security
- Personalized audit trail and event log
- Certified Flow-Xpert library for oil and gas calculations
- GERG-2008 for accurate PVT calculations
- 4 data periods, hourly, daily and 2 user-definable
- Bi-directional flow (forward + reverse)
- Ticket recalculations
- Configurable control functions (sampler, valve, flow, LACT, loading/unloading)
- Components-based mass and volume data
- Customer-specific period and batch data
- Multi-lingual support
- Advanced test & troubleshoot capability

# Value Proposition / Positioning Statement

Our Flow-X/V software enables highly accurate flow computer solutions without the need for actual flow computer hardware.

Unlike DCS, RTU and PLC solutions it provides out-of-the-box functionality for even the most demanding gas and liquid measurement applications. Like our Flow-X flow computers it provides the highest degree of accuracy, security, traceability and user-friendliness.

The Flow-X/V software connects to any HART and Modbus device, both wired and wireless, and supports a virtual unlimited number of flow meters, field devices, calculations, measurement data points, communication interfaces, displays, reports and data archives.